

Design and Technology
(Product Design)
Advanced
COMPONENT 1

Wednesday 5 June 2024 – Afternoon

Time: 2 hours 30 minutes

Diagram Booklet

THIS DIAGRAM BOOKLET MUST BE RETURNED WITH THE QUESTION PAPER AT THE END OF THE EXAMINATION.

In the boxes below, write your name, centre number and candidate number.

Surname					
Other names					
Centre Number					
Candidate Number					

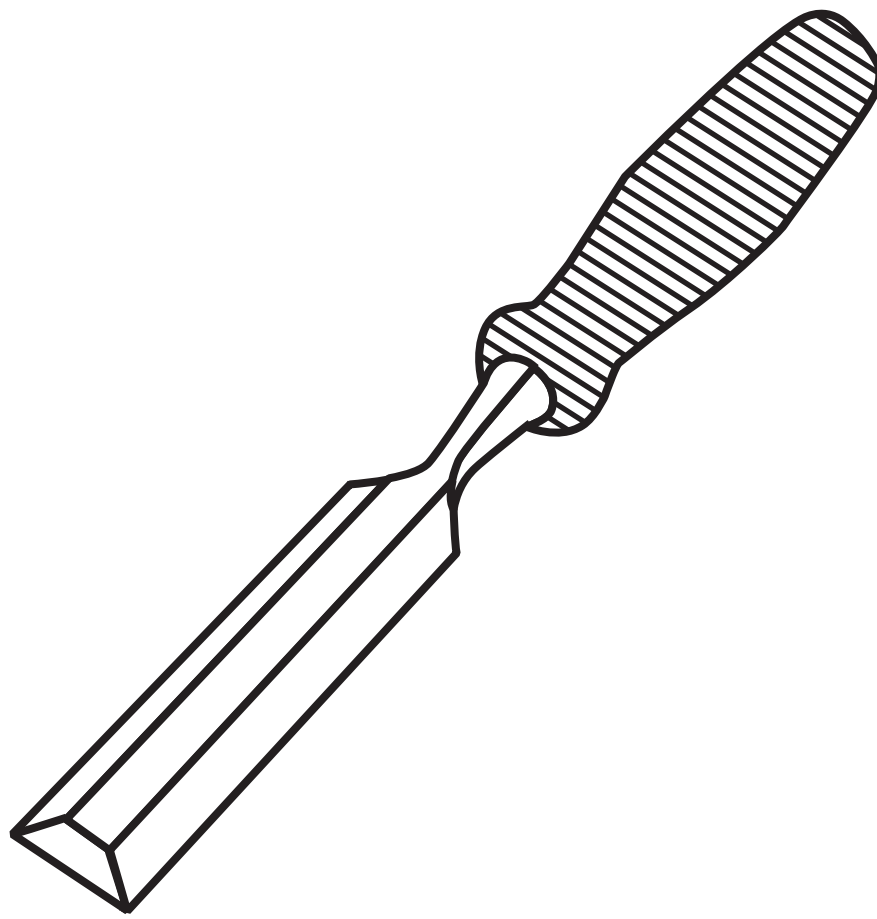
INSTRUCTIONS

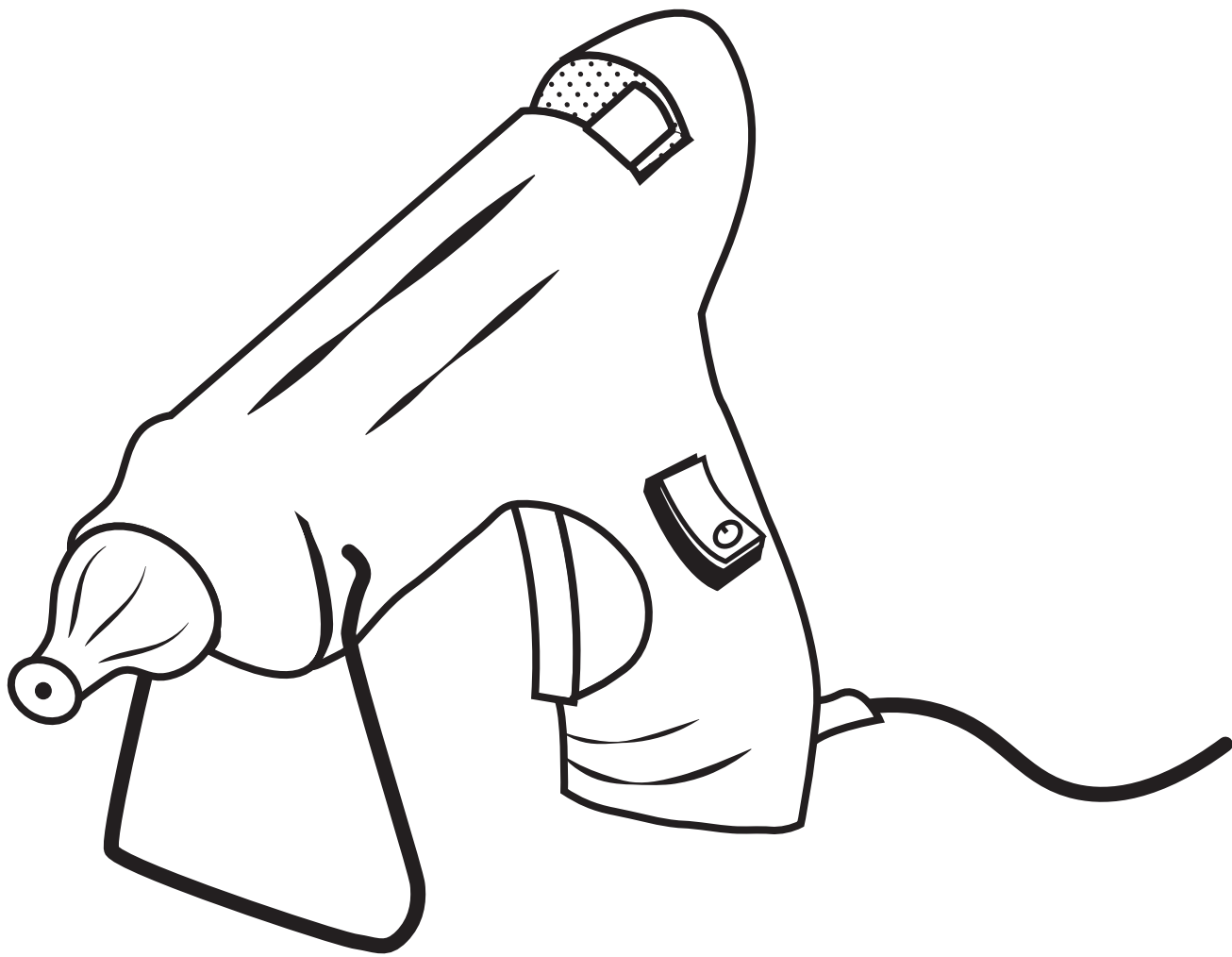
There may be spare copies of some diagrams in case you need them.

CONTENTS

Page

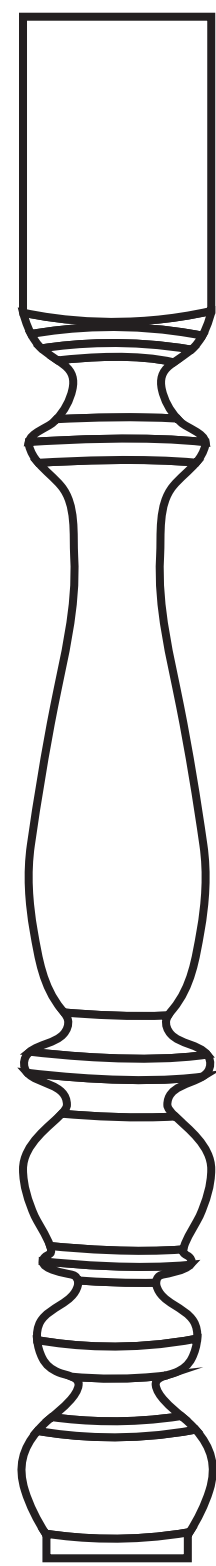
3	Question 1
4	Question 2
5	Question 3
6	Question 5
7	Question 6
8	Question 6(e)
9	Question 7 – not to scale
10	Question 7 – isometric grid
11	Question 8
12	Question 11
Spare copies	
13	Question 7 – isometric grid

Question 1**FIGURE 1**

Question 2**FIGURE 2**

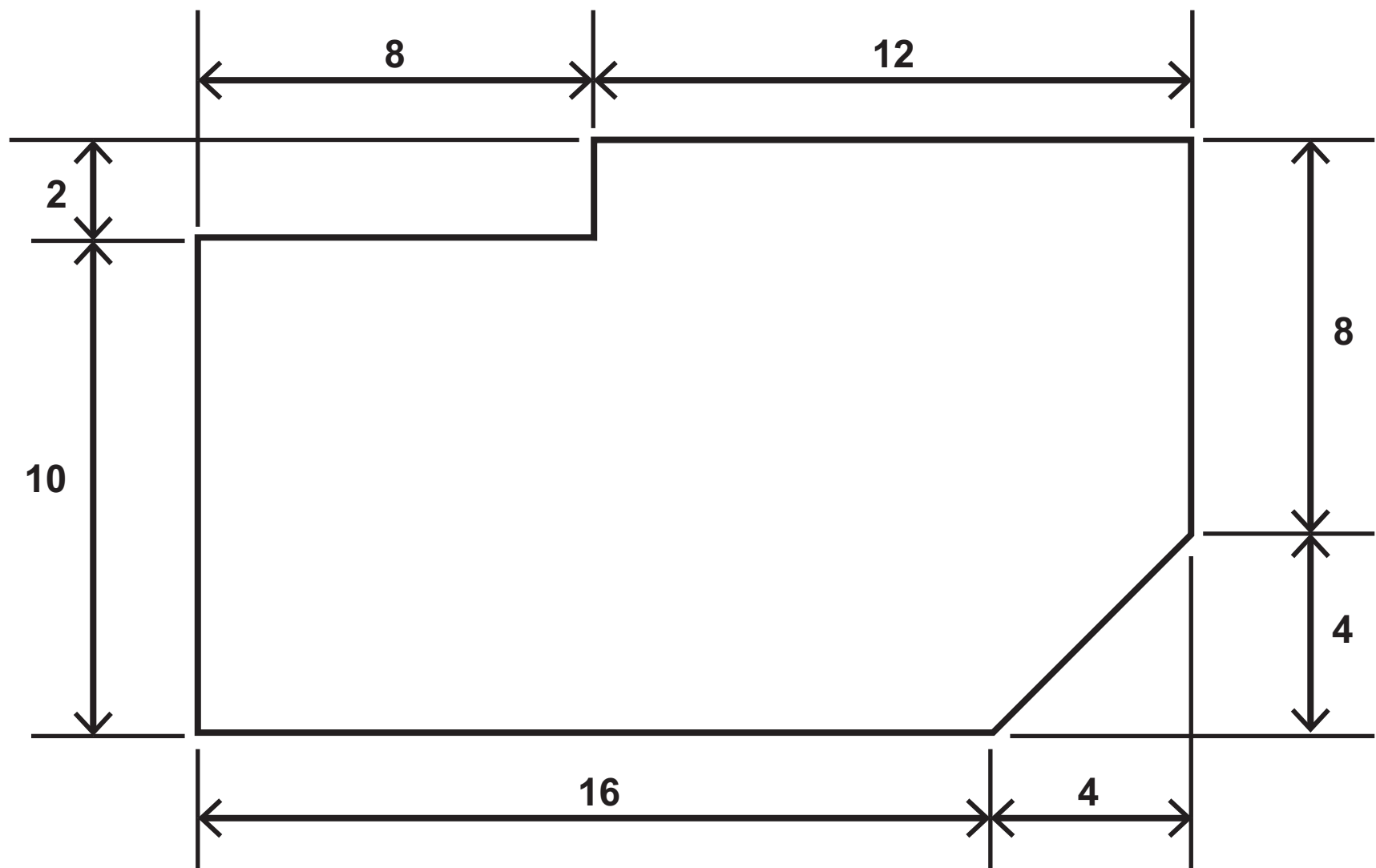
Question 3

FIGURE 3



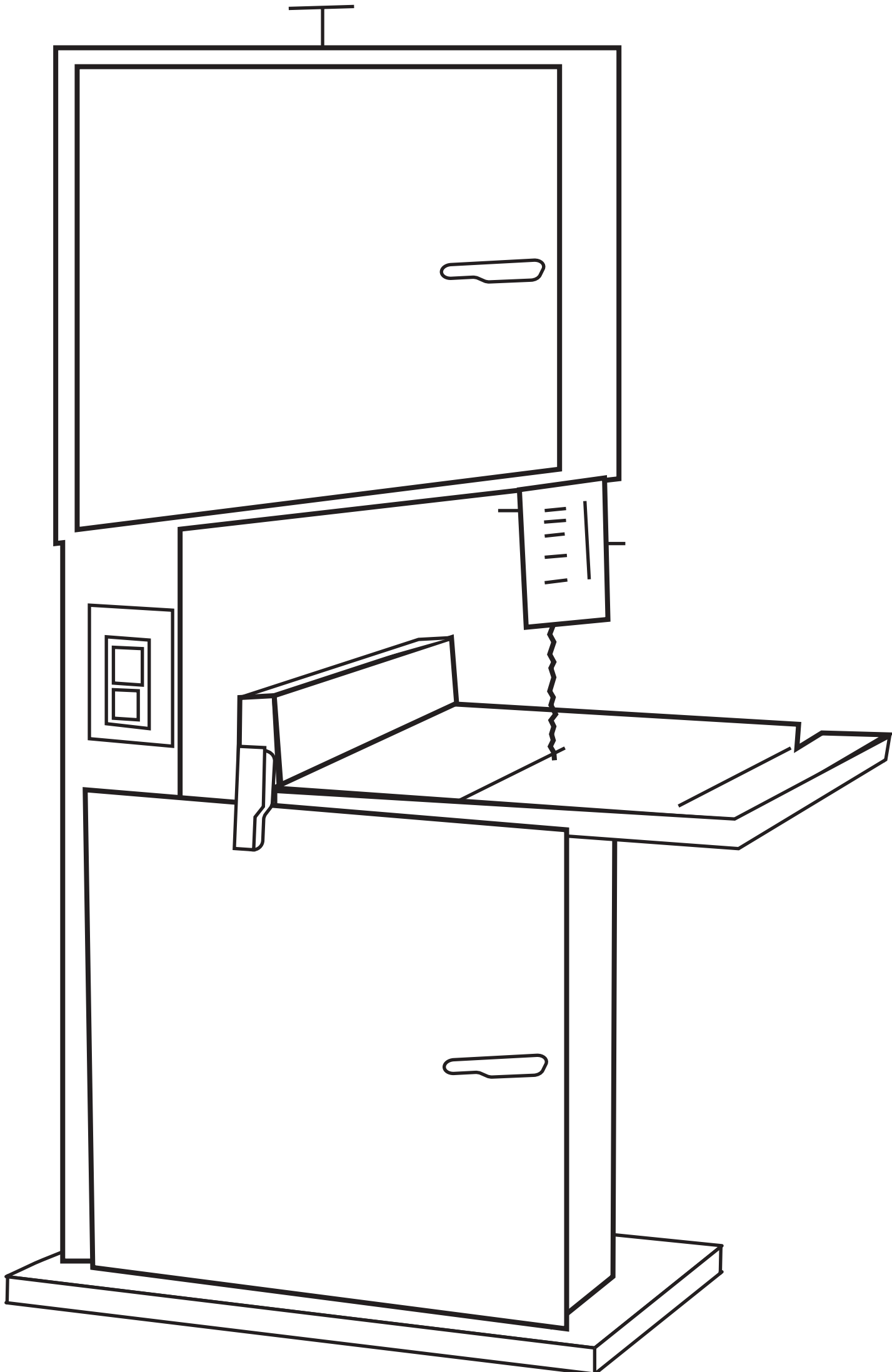
Question 5

FIGURE 4



Question 6

FIGURE 5



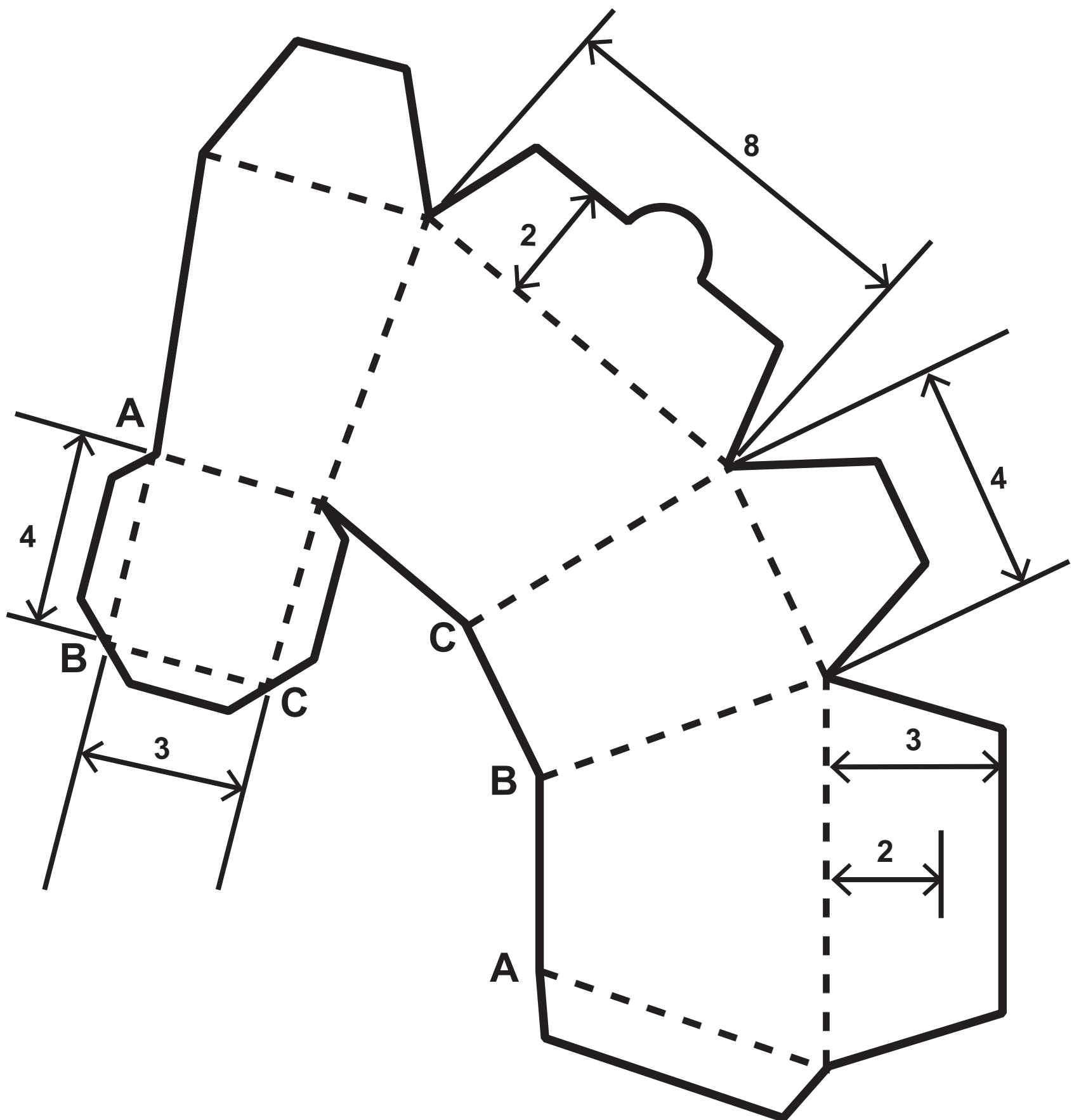
Question 6(e)

Training	Signage	Risk assessment	PPE	Safety equipment
£27,000.00	£8,260.00	£15,500.00	£18,375.00	£42,000.00

Question 7

FIGURE 6

Not to scale
All dimensions in **cm**



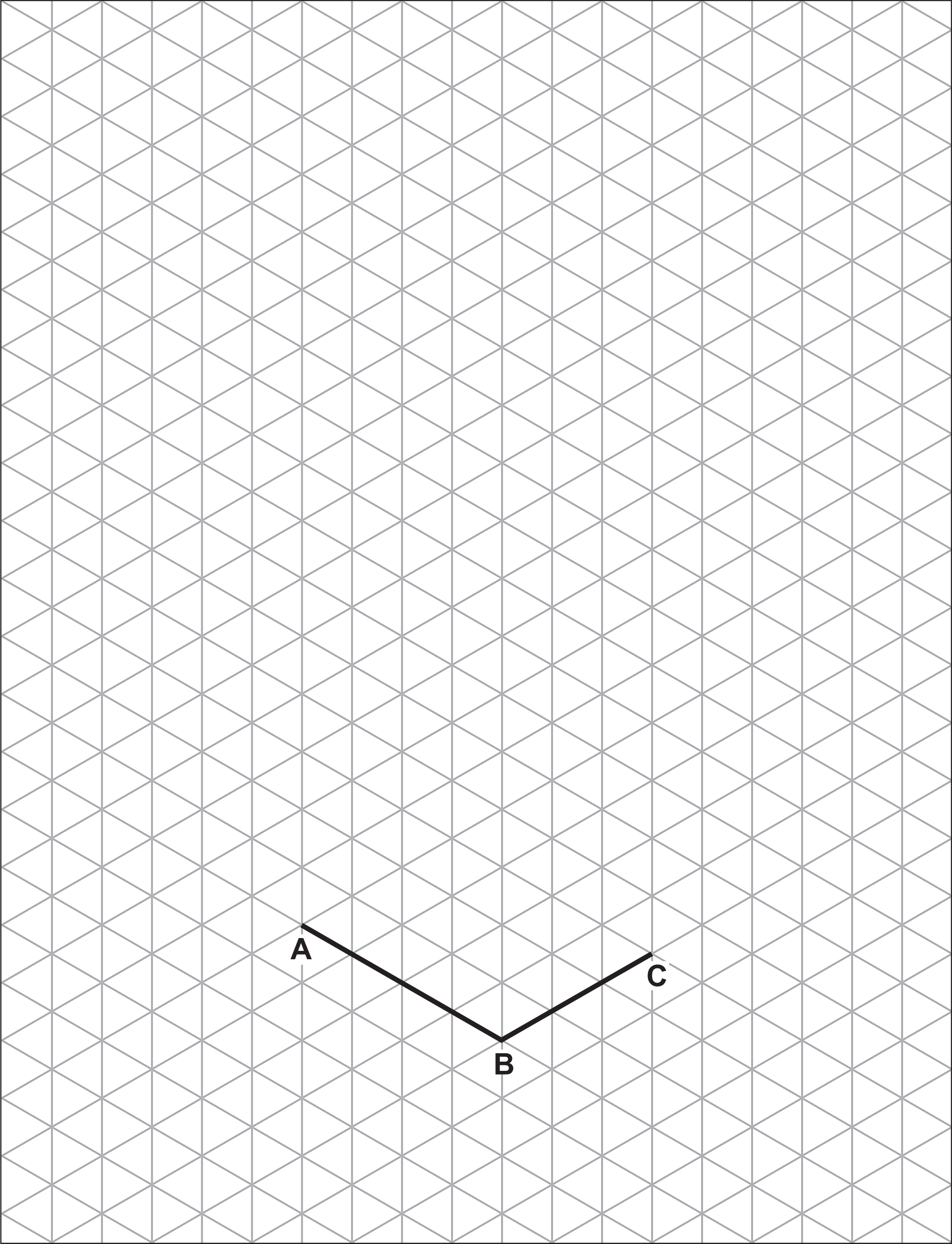
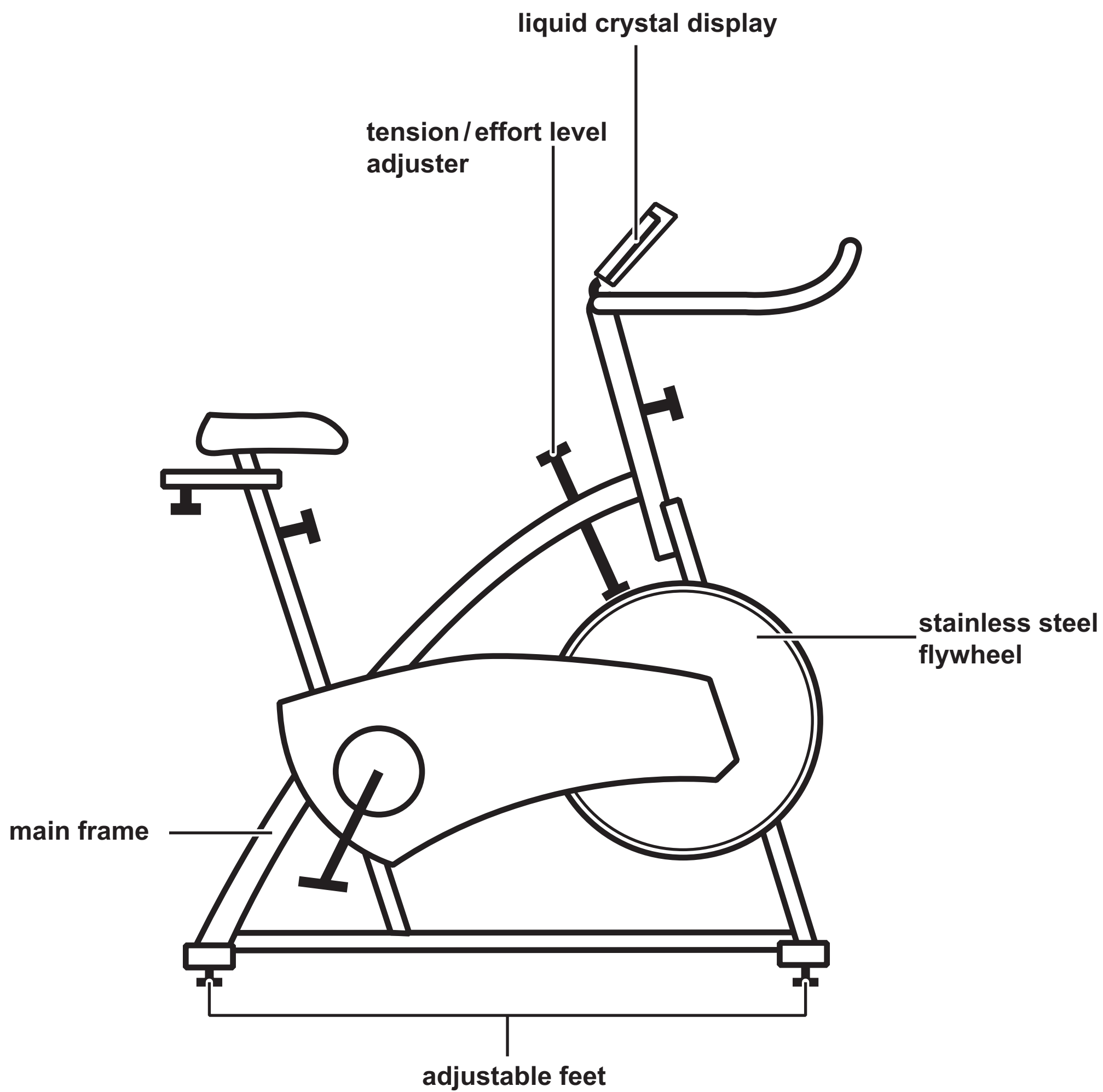


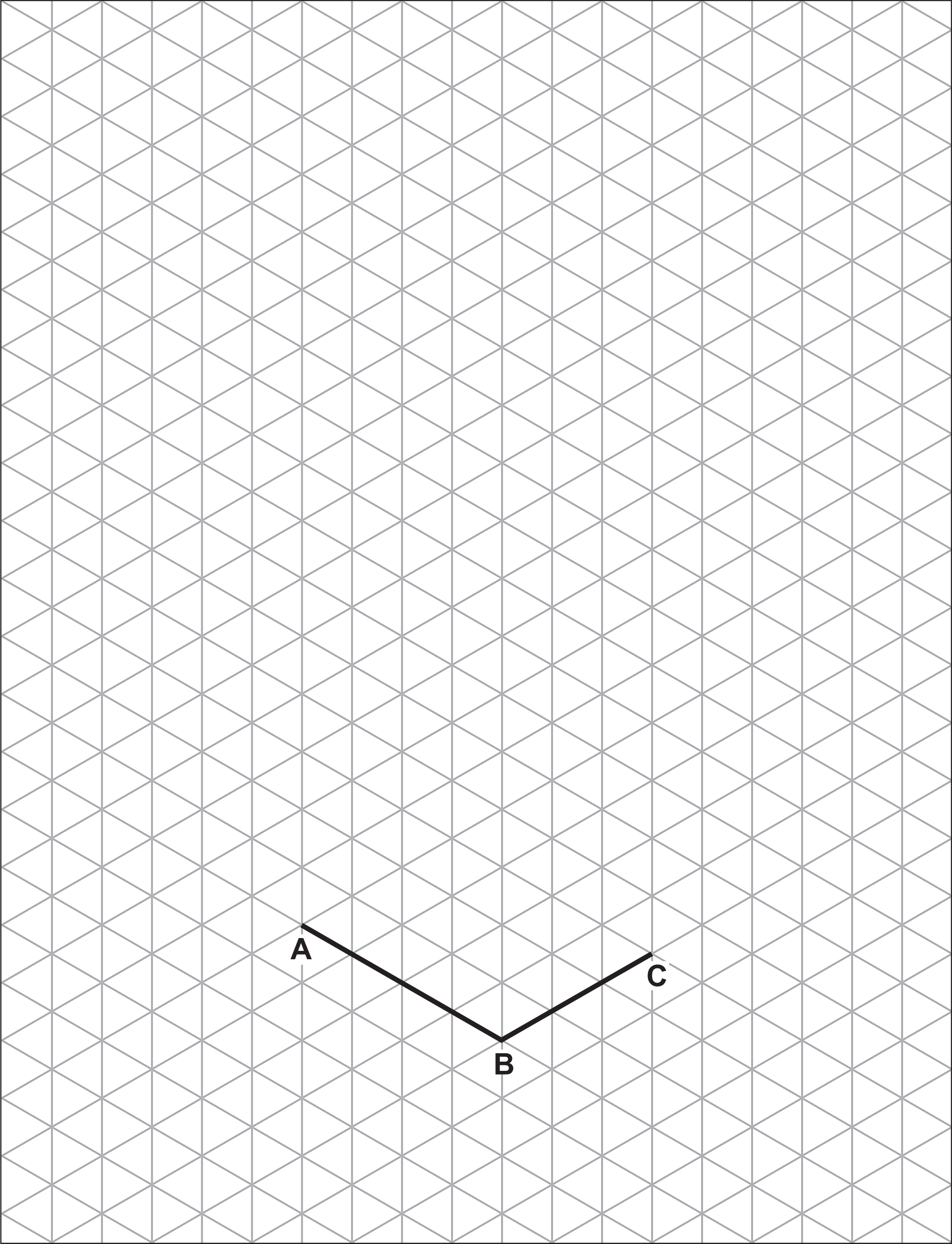
FIGURE 7



Question 11

FIGURE 8





Source information

FIGURE 7

Source: https://encrypted-tbn0.gstatic.com/s?q=tbn:ANd9GcRJAp8OUNbjdjYb86or3qknDThmuJO8VFd5vmLxARUH7Slok8cFvk52hx24Xp6XPAm_Vj8&usqp=CAU)